

A GENERAL INFORMATION

Date	
Interviewer	

A 1	Name of community		
	Locality <i>(include as many administrative levels as needed)</i>	Administrative Level 1 e.g. community, village, town	
		Administrative Level 2: e.g. municipality	
		Administrative Level 3: e.g. township, district	
		Administrative Level 4: e.g. province, state	
	Latitude		
	Longitude		
	Altitude		
Community code			

A 2	Other Administrative and/or Geographical Divisions	
	Catchment area	
	Area or planning zone	
	Other	

A 3	Total population	
	Majority ethnic group	
	Predominant language	
	Comments on demographics	

A 4	Total number of households	
--------	----------------------------	--

Distribution of households with access to a water supply system				
A 5	Code/ Water System Name	Code/ Service Provider Name	Location (<i>Local and Regional Agencies</i>)	No. of households served by each system/ provider

A 6	No. of households without access to a water system	
--------	--	--

Public services					
A 7	Electricity	Yes		No	
	Landline telephone	Yes		No	
	Mobile telephone	Yes		No	
	Mobile internet connection (3G or 4G)	Yes		No	
	Other community characteristics				

B SANITATION AND HYGIENE

Data collection method			
B 1	1. Estimate (few or no household interviews conducted)		
	2. All households surveyed using the auxiliary form (<i>see Annex II</i>)		
	3. Representative sample of households surveyed using the auxiliary form (<i>see Annex II</i>)		No. of Households sampled

Household sanitation facility	
B 2	Number of households with an improved Type 1 sanitation facility: <ul style="list-style-type: none"> Water discharge (automatic or manual) to a sewage network or septic tank
	Number of households with an improved Type 2 sanitation facility: <ul style="list-style-type: none"> Ventilated improved pit latrine (VIP) Pit latrine with slab Composting latrine/ toilet
	Number of households with an unimproved type of sanitation facility: <ul style="list-style-type: none"> Water discharge (automatic or manual) to elsewhere (street, backyard or open land, open sewage, trench, open drain or any other location) Pit latrine without slab, open pit, bucket or hanging latrine

Use of improved sanitation (Type 1 or Type 2)			
Use	Ownership	Number of households using type 1	Number of households using type 2
B 3 SOME family members use improved sanitation SOME of the time	Private		
	Shared		
ALL family members (including men, women, the elderly, and children) use improved sanitation ALL of the time	Private		
	Shared		

Use of unimproved sanitation	
Use	Number of households
B 4 SOME family members use unimproved sanitation (private or shared) SOME of the time	
ALL family members (including men, women, the elderly, and children) use unimproved sanitation (private or shared) ALL of the time	

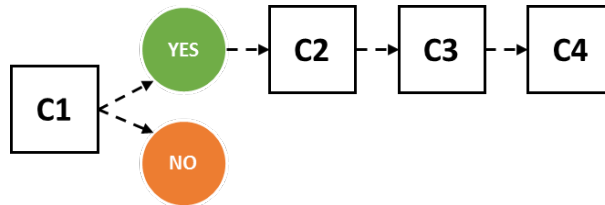
Household Hygiene	
B 5 Number of households with basic hand washing facilities (including water and soap) near (less than 10 meters) the sanitation facility	
Number of households in which ALL family members (including men, women, the elderly, and children) USE the hand washing facility ALL of the time	
Number of households in which drinking water is safely stored (in clean, well-sealed containers)	

Solid Waste Collection and Disposal			
B 6 Is there any type of solid waste collection and/ or disposal in the community?	Yes		No
Number of households with solid waste collection and/ or disposal (to be answered independently of the previous question)			
What is the most common type of solid waste disposal in the community? (e.g. burning, burying, disposed of in a body of water, etc.)			

C SCHOOLS

To be completed only if the response to A5 is YES. One form must be completed for each school in the community.

Response flowchart



Schools			
C 1	Is there a school in the community?		
	Yes	Name of reference school	
		Location of reference school	
	No		

School: General Characteristics					
C 2	Name of School				
	School Code				
	Teaching and Administrative Staff	Total No. of female teachers and employees		Total No. of male teachers and employees	
		Student Body	Total number of female students		Total number of male students

School: Water Supply System				
C 3	Does the school have a water system?	Yes	Operational with capacity to meet peak demand	
			Operational, but cannot meet peak demand	
			Non-operational	
		No		
System Code/ Name*		Location (<i>Local and regional agencies</i>)		
Comments				

Schools: Sanitation and Hygiene

A teacher's assistance is recommended to complete this section when possible.

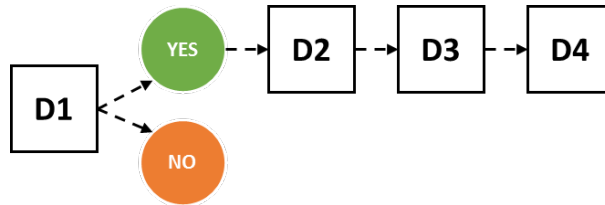
C
4

The school has:	Improved type 1 sanitation infrastructure				Improved type 2 sanitation infrastructure				Other unimproved sanitation infrastructure				Basic hand washing facilities (with water and soap) less than 10 meters from the sanitation facility			
	Yes		No		Yes		No		Yes		No		Yes		No	
No. of facilities for female staff																
No. of facilities for male staff																
No. of unisex facilities for staff																
No. of facilities for female students																
No. of facilities for male students																
No. of unisex facilities for students																
No. of shared facilities for staff and female students																
No. of shared facilities for staff and male students																
No. of shared unisex facilities for staff and students																

D HEALTH CENTER

To be completed only if the response to A6 is YES. One form must be completed for each health center in the community.

Response flowchart



Health Centers		
Are there any health centers in the community?		
D 1	Yes	Name of the health center used most often by the local population
		Location of the health center
No		

Health Center: General Characteristics				
D 2	Health Center Name			
	Health Center Code			
	Medical and Administrative Staff	Total No. of female employees		Total No. of male employees
	Average No. of Patients	Average number of female patients per day		Average number of male patients per day

Health Centers: Water Supply System			
D 3	Does the health center have a water system?	Yes	Operational with capacity to meet peak demand
			Operational, but cannot meet peak demand
			Non-operational
	No		
System Code/ Name*		Location (<i>Local and regional agencies</i>)	
Comments			

Health Centers: Sanitation and Hygiene

The health center administrator's assistance is recommended to complete this section when possible.

D
4

The health center has:	Improved type 1 sanitation infrastructure				Improved type 2 sanitation infrastructure				Other unimproved sanitation infrastructure				Basic hand washing facilities (with water and soap) less than 10 meters from sanitation facility			
	Yes		No		Yes		No		Yes		No		Yes		No	
No. of facilities for female staff																
No. of facilities for male staff																
No. of unisex facilities for staff																
No. of facilities for female patients																
No. of facilities for male patients																
No. of unisex facilities for patients																
No. of shared facilities for staff and female patients																
No. of shared facilities for staff and male patients																
No. of shared unisex facilities for staff and patients																

E INTERVENTIONS

List all interventions scheduled or in progress.

Interventions Scheduled or in Progress				
Record all water and sanitation interventions that will benefit the community and indicate status at the time of conducting the survey.				
Water Supply System Improvements				
Source/ Agency	Scheduled	Design Phase	Construction Phase	Complete
New Water System				
Source/ Agency	Scheduled	Design Phase	Construction Phase	Complete
E 1	Improved Type 1 or Type 2 Sanitation			
	<ul style="list-style-type: none"> Water discharge (automatic or manual) to a sewage network or septic tank or pit latrine Ventilated improved pit latrine (VIP) Pit latrine with slab Composting latrine/ toilet 			
	Source/ Agency	Scheduled	Design Phase	Construction Phase
E 1	Unimproved Sanitation			
	<ul style="list-style-type: none"> Water discharge (automatic or manual) to elsewhere (street, backyard or open land, open sewage, trench, open drain or any other location) Pit latrine without slab, open pit, bucket or hanging latrine 			
	Source/ Agency	Scheduled	Design Phase	Construction Phase

F COMMENTS

Comments and Observations

**F
1**

ANNEX I

The difference between “improved” and “unimproved” infrastructure should be clarified. “Improved” infrastructure hygienically separates human excreta inhibiting all possibility of human contact. “Unimproved” sanitation facilities do not ensure hygienic separation of human excreta from human contact.

The following definitions (adopted from the Joint Monitoring Programme – JMP¹) should be well understood:

- Improved Type 1

- **Water Discharge (automatic or manual).** An automatic flush toilet uses a cistern or water retention tank for flushing water, and a water seal (a U-shaped pipe or siphon under the seat or squatting platform) that stops insects and odors from emerging. A manual flush toilet uses a water seal (a U-shaped pipe or siphon under the seat or squatting platform) but unlike the automatic flush toilet, water has to be poured manually for it to flush (no cistern is used). Feces are conveyed to one of the following systems defined:
 - **Piped Sewer System.** A pipe system designed to collect human excreta (feces and urine) and wastewater and remove them from the household environment. Sewer systems consist of facilities for the collection, pumping, treatment and disposal of human excreta and wastewater.
 - **Septic Tank.** An excreta collection device consisting of a watertight settling tank, which is normally located underground, away from the house or toilet. The treated effluent of a septic tank usually seeps into the ground through a leaching pit. It can also be discharged into a sewer system.

- Improved Type 2

- **Ventilated Improved Pit Latrine (VIP).** It is a dry pit latrine ventilated by a pipe that extends above the latrine roof. The open end of the vent pipe is covered with gauze mesh or fly-proof netting and the inside of the superstructure is kept dark. The pit cover must be solid and can be made of any material (concrete, logs with dirt or mud, cement, etc.), as long as it properly covers the pit, without exposing the pit contents through more than the hole for the seat or squatting platform.
- **Pit Latrine with Slab.** It is a dry pit latrine that uses a hole in the ground completely covered by a slab or platform that is fitted either with a squatting hole or seat. The platform must be solid and can be made of any material (concrete, logs with dirt or mud, cement, etc.), as long as it properly covers the pit, without exposing the pit contents through more than the hole for the seat or squatting platform.
- **Composting Latrine/toilet:** It is a dry toilet into which carbon-rich material (vegetable wastes, straw, grass, sawdust, ash) are added to the excreta and special conditions maintained to produce inoffensive compost. A composting latrine may or may not have a urine separation device.

¹ *Definitions and methodologies: Improved and unimproved water sources and sanitation facilities*, Joint Monitoring Programme, <http://www.wssinfo.org/definitions-methods/wasan-categories/>.

- **Unimproved**

- **Water and excreta discharge (automatic or manual) in or nearby the household environment (not into a pit, septic tank, or sewer), including the street, yard/plot, open sewer, trench, a drainage way, or other location.** An automatic flush toilet uses a cistern or water retention tank for flushing water, and a water seal (a U-shaped pipe or siphon under the seat or squatting platform) that stops flies and odors from emerging. A manual flush toilet uses a water seal (a U-shaped pipe or siphon under the seat or squatting platform) but unlike the automatic flush toilet, water has to be poured manually for it to flush (no cistern is used). Unlike the Type 1 Improved toilet, the excreta may be conveyed to the street, backyard or ground, open sewage, trench, open drain or any other location.
- **Pit Latrine without Slab.** It uses a hole in the ground for excreta collection and does not have a squatting slab, platform or seat. An open pit is a rudimentary hole in the ground.
- **Bucket Latrine.** Refers to the use of a bucket or other container for the retention of feces (and sometimes urine and cleaning material), which are periodically removed for treatment, disposal, or use as fertilizer.
- **Hanging Latrine or Toilet.** Is a toilet built over the sea, a river, or other body of water, into which excreta drops directly.

Annex II: Basic Sanitation Information (Auxiliary Survey for Block B)

Community: _____

Interviewer: _____

Date: _____

No.	Head of Household	Please put a checkmark only in the applicable fields													
		Does the household have a sanitary facility? (indicate what type)				Use of sanitary facility (according to ownership and type)						Hand washing facilities		Drinking water is safely stored (in clean, well-sealed containers)	Household solid waste disposed of or collected
		Type 1	Type 2	Unimproved	None	PRIVATE (Type 1 and Type 2)		SHARED (Type 1 and Type 2)		UNIMPROVED		Basic facility (with water and soap) less than 10 meters from sanitation facility	All family members use the hand washing facility ALL of the time		
						SOME family members use the facility SOME of the time	ALL family members use the facility ALL of the time	SOME family members use the facility SOME of the time	ALL family members use the facility ALL of the time	SOME family members use the facility SOME of the time	ALL family members use the facility ALL of the time				
Total on This Page															
Accrued Totals															

Sanitation types and characteristics

* **Improved Type 1:** It isolates human excrements from human contact. Water flushing (automatic or manual) to the sewage system, septic tank or pit latrine.

* **Improved Type 2:** It isolates human excrements from human contact. No water flushing, e.g.: ventilated improved pit latrine (VIP), pit latrine with slab, composting latrine/toilet

- **Unimproved:** Once collected, excrement is disposed of unsafely onto the street, backyard or open land, open sewage, trench, open drain or any other location or body of water (the sea, a river etc.). It may or may not be washable.

No.	Head of Household	Please put a checkmark only in the fields that are applicable													
		Does the household have a sanitary facility? (Indicate what type)				Use of the sanitary facility (according to ownership and type)						Hand washing		Drinking water is safely stored (in clean, well-sealed containers)	Household solid waste disposed of or collected
		Type 1	Type 2	Unimproved	None	PRIVATE (Type 1 and Type 2)		SHARED (Type 1 and Type 2)		UNIMPROVED*		Basic facility (with water and soap) less than 10 meters from sanitation facility	All family members use the hand washing facility ALL of the time		
						SOME family members use the facility SOME of the time	ALL family members use the facility ALL of the time	SOME family members use the facility SOME of the time	ALL family members use the facility ALL of the time	SOME family members use the facility SOME of the time	ALL family members use the facility ALL of the time				
	Totals on This Page														
	Accrued Totals														